

DE-MCL NORMALLY CLOSED MANUAL, PULL VALVE

DESCRIPTION

10 size, 7/8-14 thread, "Delta" series, normally closed, manual pull valve.

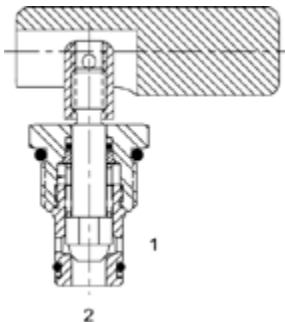
OPERATION

The DE-MCL blocks flow from (1) to (2) until an operator pulls the shaft outward. The bias spring allows for backpressure at (2) before the valve will open (see option page for pressure).

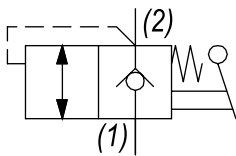
Note: pressure at port (2) will directly act on the spool and spring. Port (2) is intended to be a tank port only. The cartridge offers smooth transition in response to load changes in common hydraulic circuits.

FEATURES

- Hardened parts for long life.
- Industry common cavity.



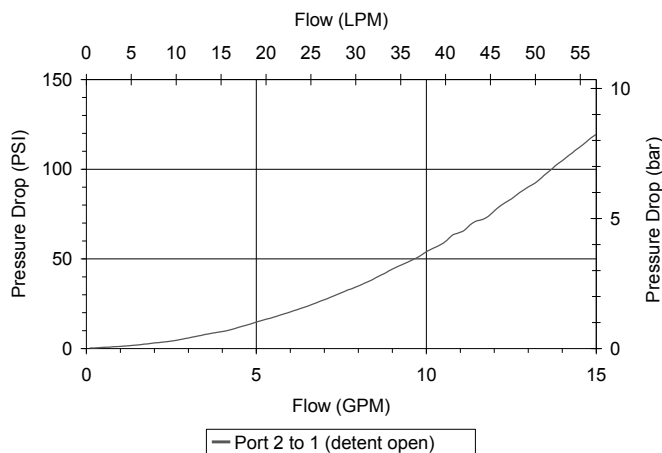
HYDRAULIC SYMBOL



Pressure above *SPRING BIAS PRESSURE* at port (2) may cause valve to self open.

PERFORMANCE

Actual Test Data (Cartridge Only)



VALVE SPECIFICATIONS

Nominal Flow	15 GPM (57 LPM)
Rated Operating Pressure	3500 PSI (241 bar)
Typical Internal Leakage (150 SSU)	5 drops/min (82 ml/min)
Viscosity Range	36 to 3000 SSU (3 to 647 cSt)
Filtration	ISO 18/16/13
Media Operating Temp. Range	-40° to 250°F (-40° to 120°C)
Weight	.15 lbs (.07 kg)
Operating Fluid Media	General Purpose Hydraulic Fluid
Cartridge Torque Requirements	30 ft-lbs (40.6 Nm)
Cavity	DELTA 2W
Cavity Form Tool (Finishing)	40500000
Seal Kit	21191201

WARNING: the specifications/application data shown in our catalogs and data sheets are intended only as a general guide for the product described (herein). Any specific application should not be undertaken without independent study, evaluation, and testing for suitability.

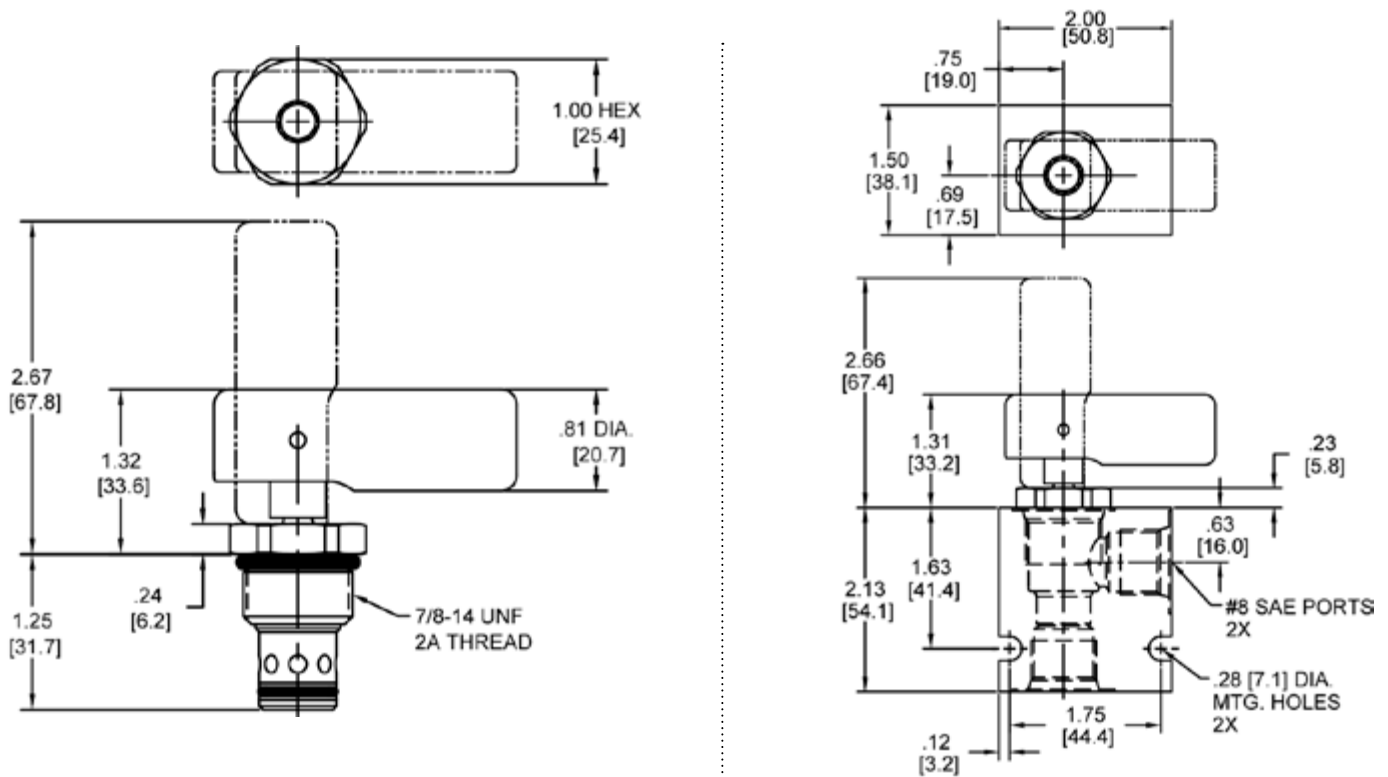


4484 Boeing Drive Rockford, IL 61109 • USA • Phone +1 (815) 397-6628 • Fax +1 (815) 397-2526
mail: delta@delta-power.com • www.delta-power.com



Via Malavolti, 36 • 41122 Modena • ITALY • Phone +39 (059) 254895 • Fax +39 (059) 253512
mail: tecnord@tecnord.com • www.tecnord.com

DIMENSIONS



Body Weight: .47 lbs (.21 kg)

ORDERING INFORMATION

DE-MCL -

OPTIONS

Buna Standard	00
Viton Standard	V0
Buna, Screen	A0
Viton, Screen	W0

Note: use screen only if flow direction is from (1) to (2).

BODIES

Blank	Without Body
N	3/8" NPTF Ports
S	#8 SAE Ports

SPRING BIAS PRESSURE

0065	65 PSI
0160	165 PSI

Note: pressure above SPRING BIAS PRESSURE at port (2) may cause valve to self open.