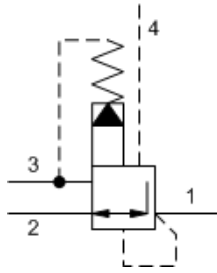


Ventable, pilot-operated pressure reducing/relieving valves reduce a high primary pressure at the inlet to a constant reduced pressure at port 1, with a full-flow relief function from port 1 to tank (port 3). The vent port (port 4) can be used as a means for remote control by pilot or 2-way valves.

**TECHNICAL DATA**

NOTE: DATA MAY VARY BY CONFIGURATION. SEE CONFIGURATION SECTION.



Factory Pressure Settings Established at	blocked control port (dead headed)
Maximum Operating Pressure	350 bar
Control Pilot Flow	0,25 - 0,33 L/min.
Adjustment - No. of CW Turns from Min. to Max. setting	5
Locknut Hex Size	15 mm
Locknut Torque	9 - 10 Nm
Seal kit - Cartridge	Buna: 990024007
Seal kit - Cartridge	Polyurethane: 990024002
Seal kit - Cartridge	Viton: 990024006

**CONFIGURATION OPTIONS**
**Model Code Example: PVJDLAN**

CONTROL	(L) ADJUSTMENT RANGE	(A) SEAL MATERIAL	(N) MATERIAL/COATING
<b>L</b> Standard Screw Adjustment	<b>A</b> 100 - 3000 psi (7 - 210 bar), 200 psi (14 bar) Standard Setting	<b>N</b> Buna-N	Standard Material/Coating
<b>C</b> Tamper Resistant - Factory Set	<b>B</b> 50 - 1500 psi (3,5 - 105 bar), 200 psi (14 bar) Standard Setting	<b>V</b> Viton	IAP Stainless Steel, Passivated
<b>K</b> Handknob	<b>C</b> 150 - 6000 psi (10,5 - 420 bar), 200 psi (14 bar) Standard Setting		
	<b>D</b> 25 - 800 psi (1,7 - 55 bar), 200 psi (14 bar) Standard Setting		
	<b>E</b> 25 - 400 psi (1,7 - 28 bar), 200 psi (14 bar) Standard Setting		
	<b>H</b> 30 - 3000 psi (2 - 210 bar), 200 psi (14 bar) Standard Setting		
	<b>J</b> 25 - 1500 psi (1,7 - 105 bar), 200 psi (14 bar) Standard Setting		
	<b>W</b> 100 - 4500 psi (7 - 315 bar), 200 psi (14 bar) Standard Setting		