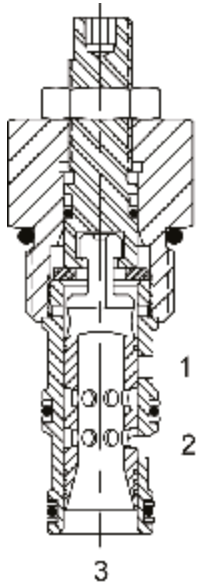


DF-M3A MANUAL ROTARY SPOOL VALVE, 3 WAY 2 POSITION**DESCRIPTION**

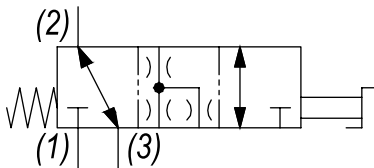
10 size, 7/8-14 thread, "Delta" series, 3 way 2 position, manual rotary spool valve.

OPERATION

The DF-M3A when rotated fully to the clockwise position, the cartridge directs flow from (3) to (2) or (2) to (3) and blocks flow at (1). When rotated fully to the counterclockwise position, the cartridge directs flow from (1) to (3) or (3) to (1) and blocks flow at (2). All ports are closed in transition.

FEATURES

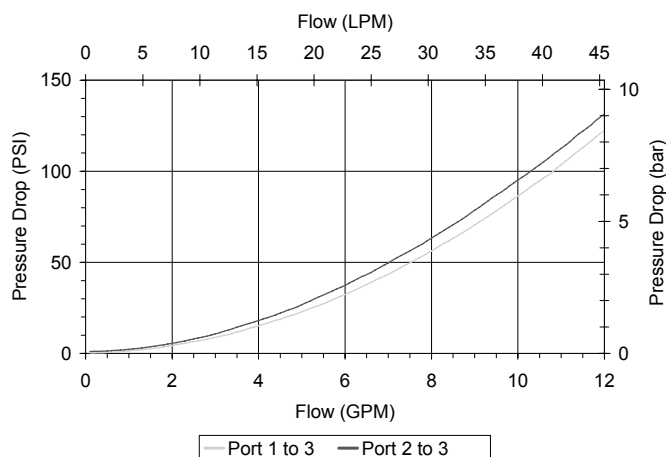
- Hardened parts for long life.
- Industry common cavity.

HYDRAULIC SYMBOL

May be used as metering product. Valve has approximately 3.5 turns adjustment from extreme clockwise fully to counterclockwise positions. See chart for pressure drop in both positions.

PERFORMANCE

Actual Test Data (Cartridge Only)

**VALVE SPECIFICATIONS**

Nominal Flow	12 GPM (45 LPM)
Rated Operating Pressure	3000 PSI (207 bar)
Typical Internal Leakage (150 SSU)	5 cu in/min (82 ml/min)
Viscosity Range	36 to 3000 SSU (3 to 647 cSt)
Filtration	ISO 18/16/13
Media Operating Temp. Range	-40° to 250°F (-40° to 120°C)
Weight	.49 lbs (.22 kg)
Operating Fluid Media	General Purpose Hydraulic Fluid
Cartridge Torque Requirements	30 ft-lbs (40.6 Nm)
Cavity	DELTA 3W
Cavity Form Tool (Finishing)	40500001
Seal Kit	21191210

WARNING: the specifications/application data shown in our catalogs and data sheets are intended only as a general guide for the product described (herein). Any specific application should not be undertaken without independent study, evaluation, and testing for suitability.

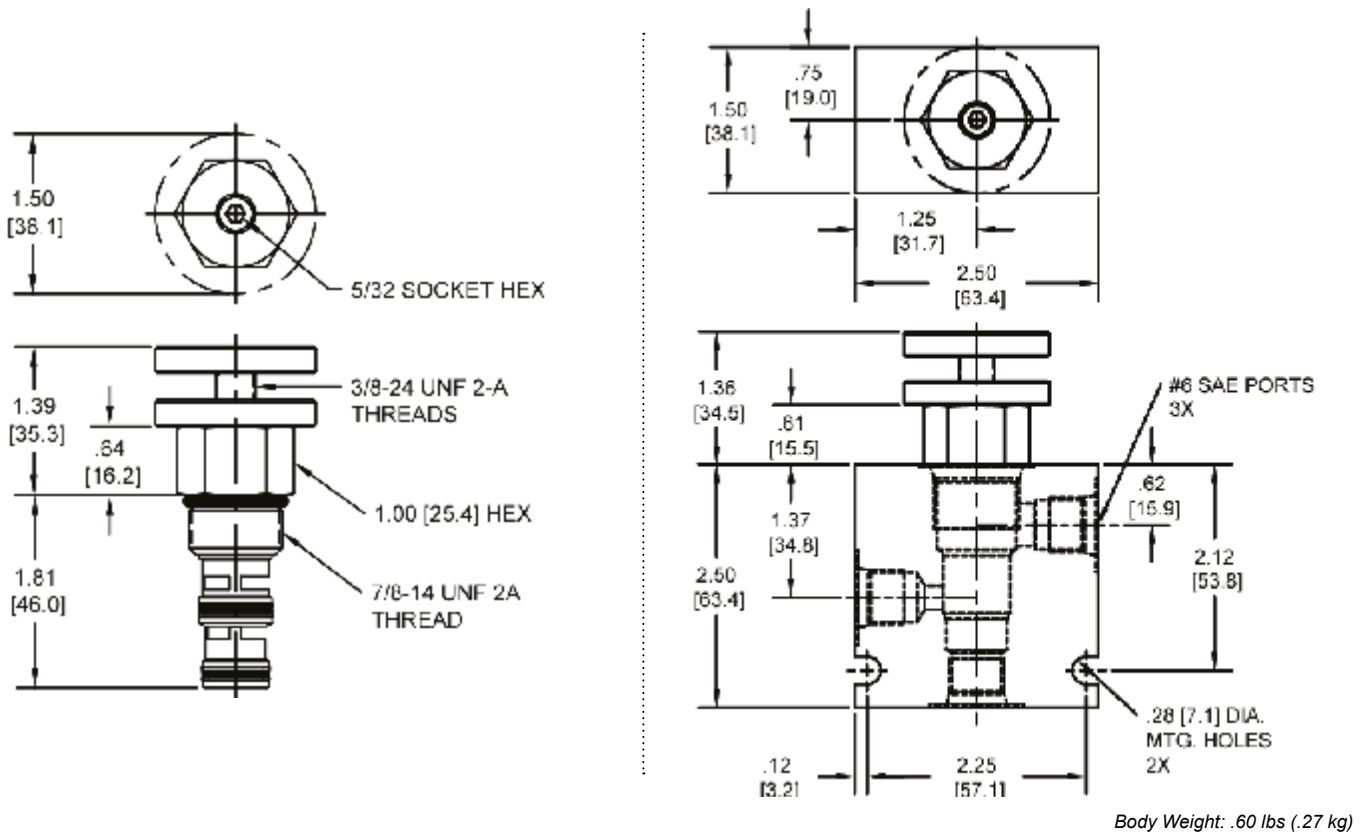


4484 Boeing Drive Rockford, IL 61109 • USA • Phone +1 (815) 397-6628 • Fax +1 (815) 397-2526
mail: delta@delta-power.com • www.delta-power.com

TECNORD

Via Malavolti, 36 • 41122 Modena • ITALY • Phone +39 (059) 254895 • Fax +39 (059) 253512
mail: tecnord@tecnord.com • www.tecnord.com

DIMENSIONS



ORDERING INFORMATION

DF-M3A		-	-
		OPTIONS	BODIES
Buna, Standard	00	Blank	Without Body
Viton, Standard	V0	N	1/4" NPTF Ports
Buna, Knob	OK	S	#6 SAE Ports
Viton, Knob	VK		