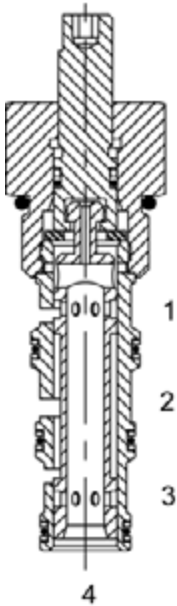


DG-M4A MANUAL SPOOL ROTARY VALVE, 4 WAY 2 POSITION, CRISS CROSS



DESCRIPTION

10 size, 7/8-14 thread, "Delta" series, manual rotary spool valve, 4 way 2 position, criss cross.

OPERATION

The DG-M4A, when rotated fully to clockwise position, the cartridge directs flow between (2) to (3) and (1) to (4). When rotated fully to counterclockwise position, the cartridge directs flow between (3) to (4) and (1) to (2). All ports are closed in transition.

FEATURES

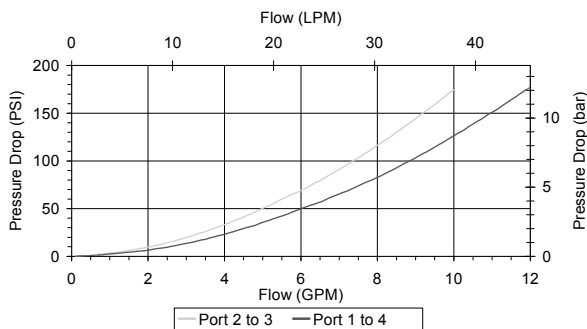
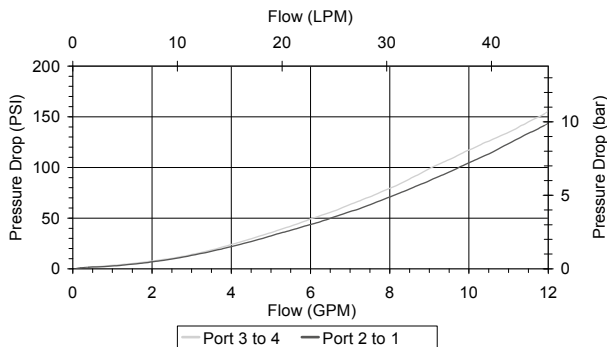
- Hardened parts for long life.
- Industry common cavity.



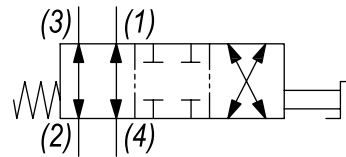
May be used as metering product. Valve has approximately 3.5 turns adjustment from extreme clockwise fully to counterclockwise positions. See chart for pressure drop in both positions.

PERFORMANCE

Actual Test Data (Cartridge Only)



HYDRAULIC SYMBOL



VALVE SPECIFICATIONS

| | |
|------------------------------------|----------------------------------|
| Nominal Flow | 10 GPM (38 LPM) |
| | 8 GPM (30 LPM) from (2) to (3) |
| Rated Operating Pressure | 3000 PSI (207 bar) |
| Typical Internal Leakage (150 SSU) | 5 cu in/min (82 ml/min) per path |
| Viscosity Range | 36 to 3000 SSU (3 to 647 cSt) |
| Filtration | ISO 18/16/13 |
| Media Operating Temp. Range | -40° to 250°F (-40° to 120°C) |
| Weight | .32 lbs (.15 kg) |
| Operating Fluid Media | General Purpose Hydraulic Fluid |
| Cartridge Torque Requirements | 30 ft-lbs (40.6 Nm) |
| Cavity | DELTA 4W |
| Cavity Form Tool (Finishing) | 40500002 |
| Seal Kit | 21191214 |

WARNING: the specifications/application data shown in our catalogs and data sheets are intended only as a general guide for the product described (herein). Any specific application should not be undertaken without independent study, evaluation, and testing for suitability.

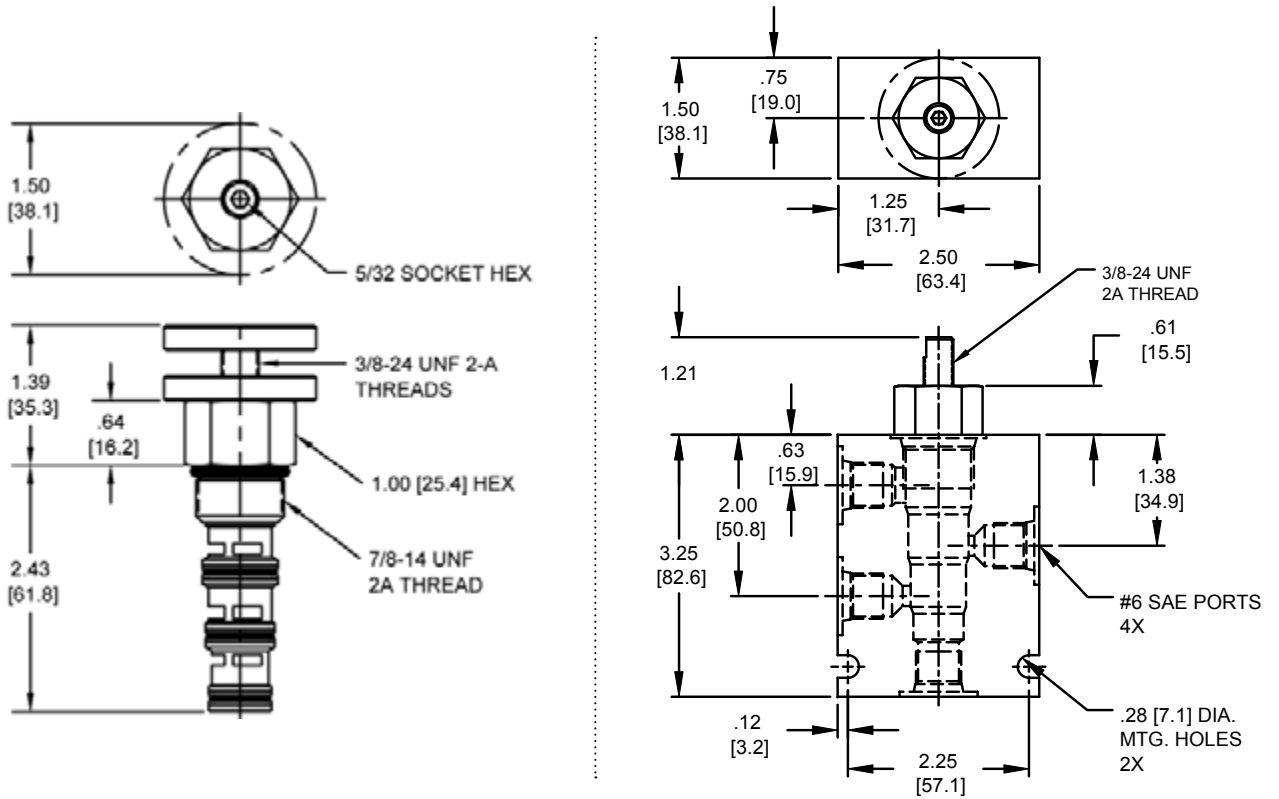


4484 Boeing Drive Rockford, IL 61109 • USA • Phone +1 (815) 397-6628 • Fax +1 (815) 397-2526
 mail: delta@delta-power.com • www.delta-power.com



Via Malavolti, 36 • 41122 Modena • ITALY • Phone +39 (059) 254895 • Fax +39 (059) 253512
 mail: tecnord@tecnord.com • www.tecnord.com

DIMENSIONS



Body Weight: .99 lbs (.45 kg)

ORDERING INFORMATION

| | | | |
|-----------------|-----------|---|---------------------------|
| DG-M4A | | - | - |
| | | | |
| OPTIONS | | | BODIES |
| Buna, Standard | 00 | | Blank Without Body |
| Viton, Standard | V0 | | N 1/4" NPTF Ports |
| Buna, Knob | 0K | | S #6 SAE Ports |
| Viton, Knob | VK | | |

W 40 / 2017

WARNING: the specifications/application data shown in our catalogs and data sheets are intended only as a general guide for the product described (herein). Any specific application should not be undertaken without independent study, evaluation, and testing for suitability.



4484 Boeing Drive Rockford, IL 61109 • USA • Phone +1 (815) 397-6628 • Fax +1 (815) 397-2526
 mail: delta@delta-power.com • www.delta-power.com



Via Malavolti, 36 • 41122 Modena • ITALY • Phone +39 (059) 254895 • Fax +39 (059) 253512
 mail: tecnord@tecnord.com • www.tecnord.com