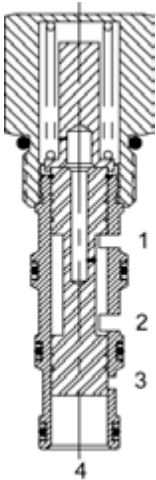


DG-PCB PRESSURE COMPENSATING VALVE, RESTRICTIVE TYPE WITH BY-PASS



DESCRIPTION

10 size, 7/8-14 thread, "Delta" series, pressure compensating valve, restrictive type with bypass.

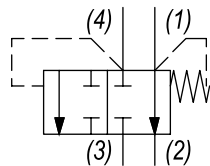
OPERATION

The DG-PCB allows pressure compensated or proportional flow from (1) to (2) regulated by the pressure differential across (1) and (4) with a bypass of (4) to (3). The spring chamber is constantly connected at (1).

FEATURES

- Hardened parts for long life.
- Industry common cavity.

HYDRAULIC SYMBOL

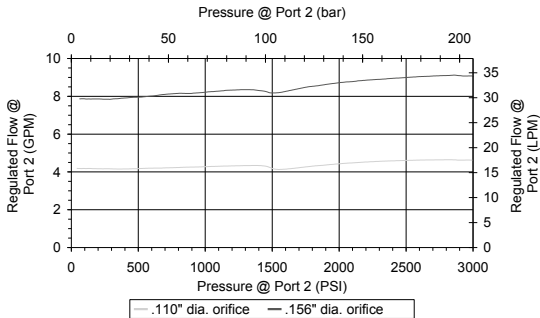


DG-PCB is not intended for differential pressure more than 1500 PSI from (4) to (3). Consult Factory for abrupt pressure change applications that exceed 1500 PSI, for alternative products.

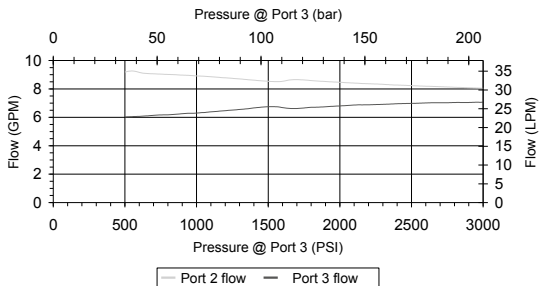
PERFORMANCE

Actual Test Data (Cartridge Only with 150 PSI Spring)

10 GPM Supply flow, .110" Orifice, 150 PSI spring
 15 GPM Supply flow, .156" Orifice, 150 PSI spring - 1500 PSI load on port (3)



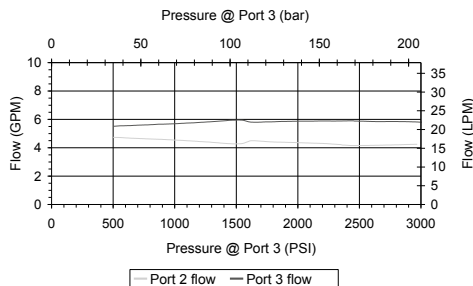
Priority port (2) load: 1500-1700 psi, .156" dia orifice, 15 gpm supply
 not intended for differential pressure > 1500 psi port (4) to port (3)



VALVE SPECIFICATIONS

Nominal Flow	10 GPM (38 LPM)
Rated Operating Pressure	3500 PSI (241 bar)
Typical Internal Leakage (150 SSU)	5 cu in/min (82 ml/min) per path
Viscosity Range	36 to 3000 SSU (3 to 647 cSt)
Filtration	ISO 18/16/13
Media Operating Temp. Range	-40° to 250°F (-40° to 120°C)
Weight	.38 lbs (.17 kg)
Operating Fluid Media	General Purpose Hydraulic Fluid
Cartridge Torque Requirements	30 ft-lbs (40.6 Nm)
Cavity	DELTA 4W
Cavity Form Tool (Finishing)	40500002
Seal Kit	21191214

Priority port (2) load: 1500-1700 PSI, .110" dia orifice, 10 GPM supply
 not intended for differential pressure > 1500 PSI port (4) to port (3)



WARNING: the specifications/application data shown in our catalogs and data sheets are intended only as a general guide for the product described (herein). Any specific application should not be undertaken without independent study, evaluation, and testing for suitability.

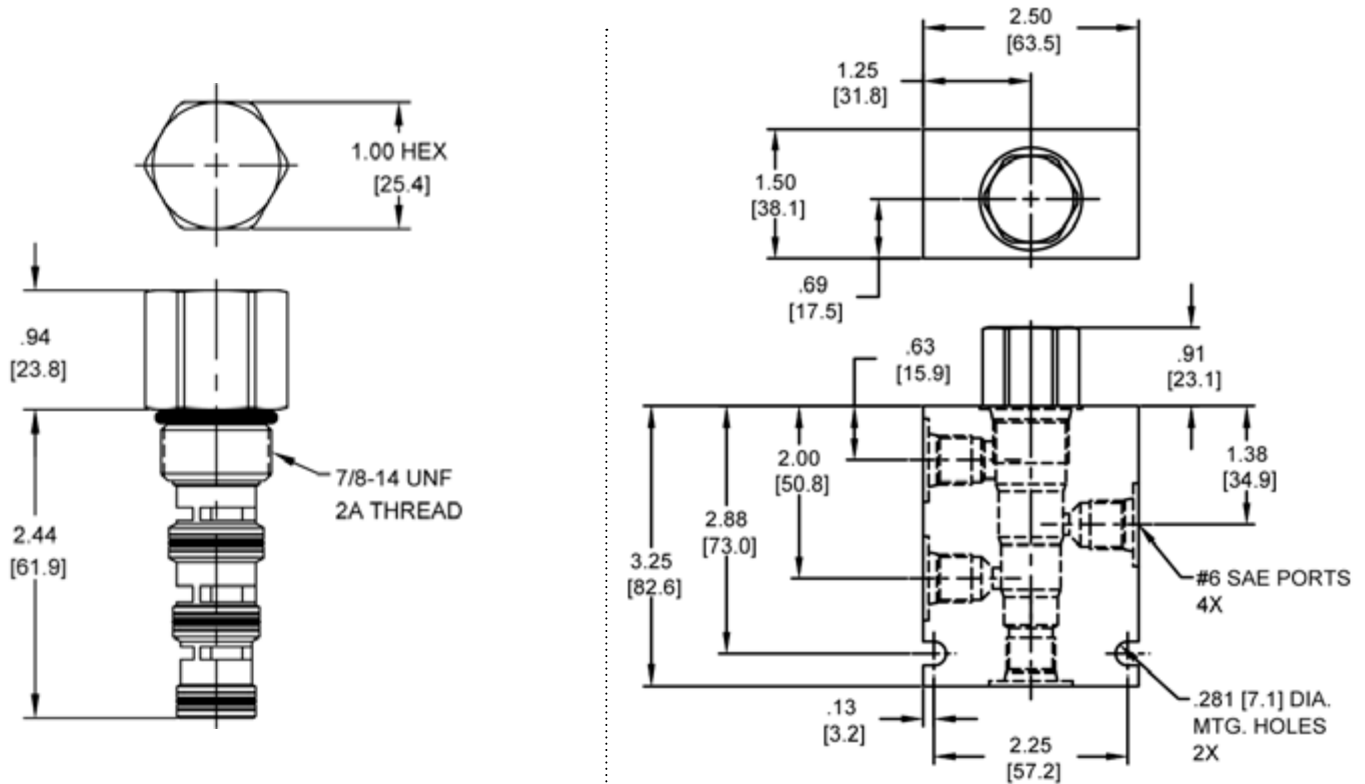


4484 Boeing Drive Rockford, IL 61109 • USA • Phone +1 (815) 397-6628 • Fax +1 (815) 397-2526
 mail: delta@delta-power.com • www.delta-power.com



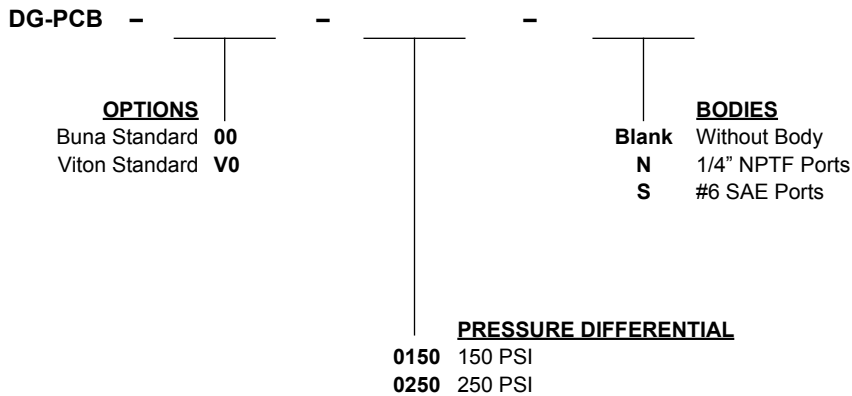
Via Malavolti, 36 • 41122 Modena • ITALY • Phone +39 (059) 254895 • Fax +39 (059) 253512
 mail: tecnord@tecnord.com • www.tecnord.com

DIMENSIONS



Body Weight: .99 lbs (.45 kg)

ORDERING INFORMATION



Differential Pressure Across External Controlling Orifice

W 40 / 2017

WARNING: the specifications/application data shown in our catalogs and data sheets are intended only as a general guide for the product described (herein). Any specific application should not be undertaken without independent study, evaluation, and testing for suitability.



4484 Boeing Drive Rockford, IL 61109 • USA • Phone +1 (815) 397-6628 • Fax +1 (815) 397-2526
 mail: delta@delta-power.com • www.delta-power.com



Via Malavolti, 36 • 41122 Modena • ITALY • Phone +39 (059) 254895 • Fax +39 (059) 253512
 mail: tecnord@tecnord.com • www.tecnord.com