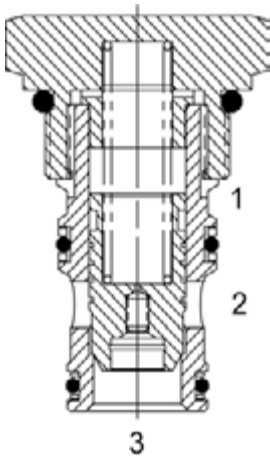


SL-PLB SUPER SERIES, LOGIC VALVE**DESCRIPTION**

16 size, 1 5/16-12 thread, "Super" series, logic valve.

OPERATION

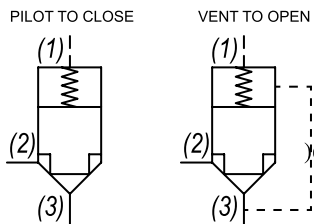
The SL-PLB with an orifice between ports (3) and (1) maintains a constant flow rate from (3) regardless of load pressure changes in the system upstream of (3), or in the bypass leg at (2) as long as pressure at (2) is less than (1). Used for basic blocking applications.

FEATURES

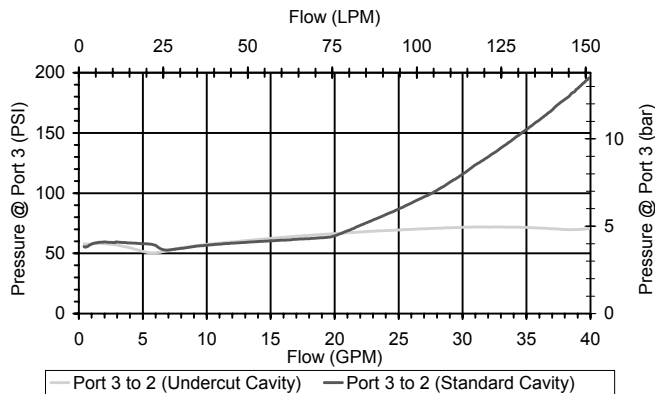
- Hardened parts for long life.
- Industry common cavity.



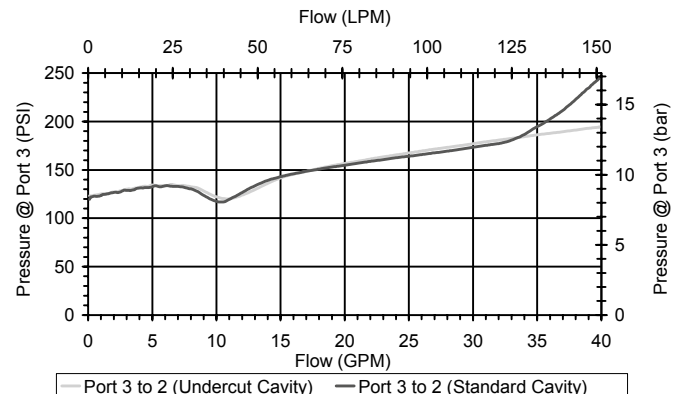
For bidirectional applications see SL-PLC.
For metering see SLPCA or SL-PCB.

HYDRAULIC SYMBOL**PERFORMANCE**

Actual Test Data (Cartridge Only)

**VALVE SPECIFICATIONS**

Nominal Flow	40 GPM (151 LPM)
Rated Operating Pressure	3500 PSI (241 bar)
Viscosity Range	36 to 3000 SSU (3 to 647 cSt)
Filtration	ISO 18/16/13
Media Operating Temp. Range	-40° to 250°F (-40° to 120°C)
Weight	.69 lbs (.31 kg)
Operating Fluid Media	General Purpose Hydraulic Fluid
Cartridge Torque Requirements	90 ft-lbs (122 Nm)
Cavity	SUPER 3WS
Cavity Form Tool (Finishing)	40500021
Seal Kit	21191409
Seat Ratio	Area of the pilot is 1.5 times the area of the seat at Port (3)



WARNING: the specifications/application data shown in our catalogs and data sheets are intended only as a general guide for the product described (herein). Any specific application should not be undertaken without independent study, evaluation, and testing for suitability.

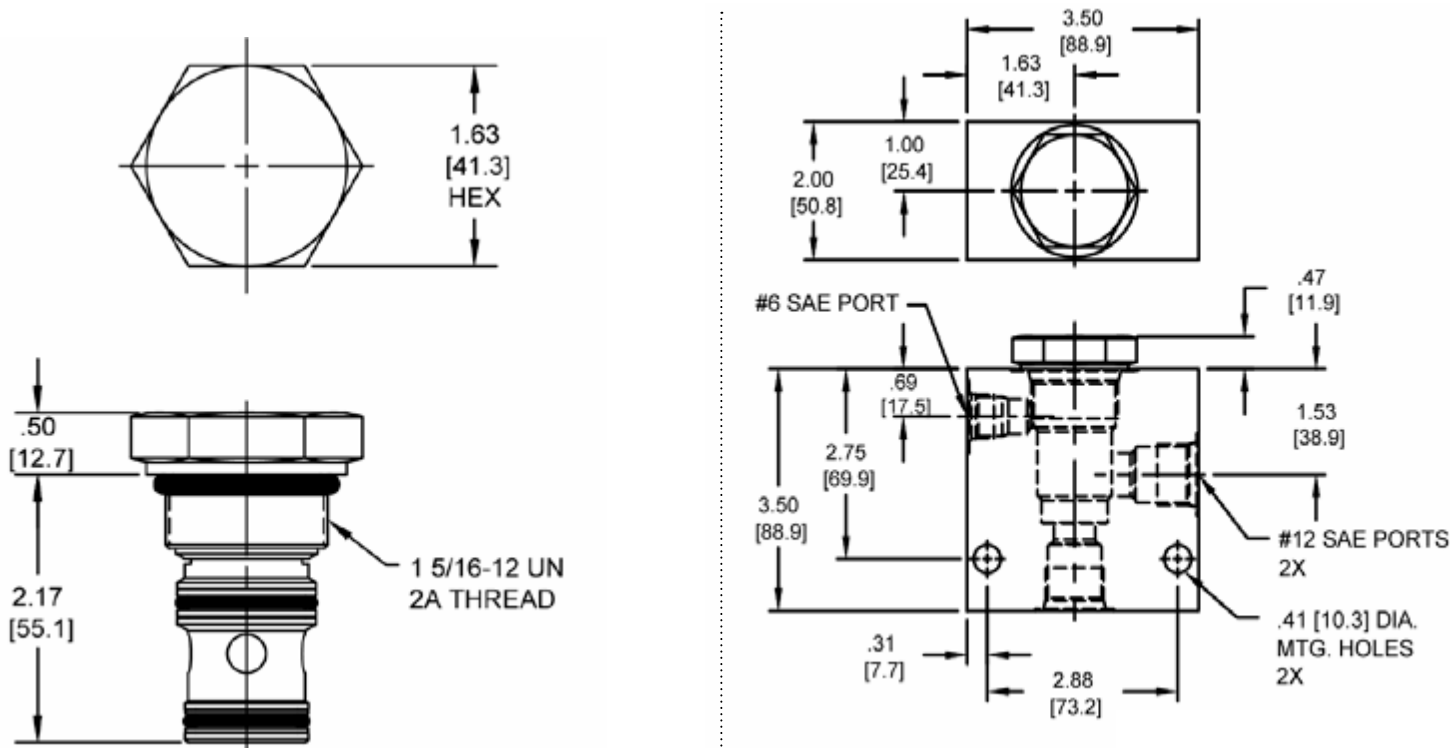


4484 Boeing Drive Rockford, IL 61109 • USA • Phone +1 (815) 397-6628 • Fax +1 (815) 397-2526
mail: delta@delta-power.com • www.delta-power.com

TECNORD

Via Malavolti, 36 • 41122 Modena • ITALY • Phone +39 (059) 254895 • Fax +39 (059) 253512
mail: tecnord@tecnord.com • www.tecnord.com

DIMENSIONS



Body Weight: 1.89 lbs (.86 kg)

ORDERING INFORMATION

SL-PLB	-	-	-	-
<u>OPTIONS</u>				<u>BODIES</u>
Buna, Pilot to Close	0P			Blank Without Body
Viton, Pilot to Close	VP			S #12 SAE Ports
Buna, Vent to Open	0V			
Viton, Vent to Open	VV			
Pilot to Close w/seals	0B			
Pilot to Close w/seals	VB			
Vent to Open w/seals	0C			
Vent to Open w/seals	VC			
		<u>PRESSURE SETTING</u>		
		0020	20 PSI	
		0050	50 PSI	
		0100	100 PSI	
		0150	150 PSI	

W15 / 2017

WARNING: the specifications/application data shown in our catalogs and data sheets are intended only as a general guide for the product described (herein). Any specific application should not be undertaken without independent study, evaluation, and testing for suitability.



4484 Boeing Drive Rockford, IL 61109 • USA • Phone +1 (815) 397-6628 • Fax +1 (815) 397-2526
mail: delta@delta-power.com • www.delta-power.com



Via Malavolti, 36 • 41122 Modena • ITALY • Phone +39 (059) 254895 • Fax +39 (059) 253512
mail: tecnord@tecnord.com • www.tecnord.com