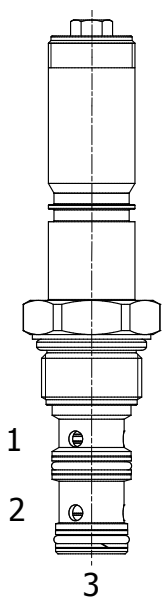


EF-F3G 3 WAY PRESSURE COMPENSATED PRIORITY TYPE PROP. FLOW REGULATOR



DESCRIPTION

10 size, 7/8-14 thread, "Delta" series, solenoid operated, normally closed, spool style, 3 ways priority type pressure compensated proportional flow regulator. It can also be used as a restrictive-type 2 way, pressure-compensated flow regulator when the bypass line (port 2) is blocked.

OPERATION

EF-F3G maintains a constant flow rate out of (1) regardless of load pressure variations in the circuit downstream of (3) and regardless bypass pressure variations in the circuit downstream of (2). Excess flow bypasses out of (2). When coil is not energized, there is no regulated flow out of (1).

OPERATION OF MANUAL OVERRIDE OPTION: to override, turn the manual override screw counterclockwise. To release turn the manual override screw clockwise.

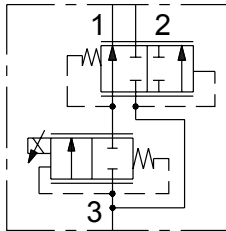
FEATURES

- Hardened parts for long-life.
- Industry common cavity.
- Excellent linearity and low hysteresis characteristics.
- Cartridges are voltage interchangeable.
- Optional coil voltages and terminations available.
- Unitized, molded coil design.
- Continuous duty rated solenoid.



It can be used as a restrictive 2-way pressure-compensated flow control valve, blocking bypass line port (2).

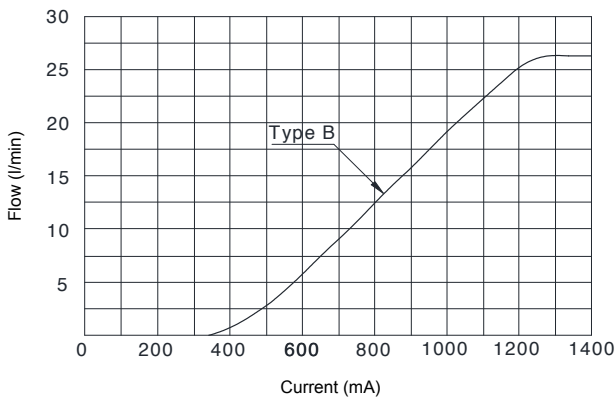
HYDRAULIC SYMBOL



PERFORMANCE

Flow vs. Current

Coil 12 VDC - 130 Hz PWM - Oil 26 cSt (121 SSU) @ 50°C (104°F)



VALVE SPECIFICATIONS

| | |
|--|---|
| Flow Range | See curves for various versions |
| Max System Pressure | 3500 PSI (241 bar) |
| Leakage | 10 cu-in/min @ 3000 PSI 160 cc/min @ 207 bar |
| Hysteresis | ±5% |
| Viscosity Range | 36 to 3000 SSU (3 to 647 cSt) |
| Filtration | ISO 18/16/13 |
| Media Operating Temp. Range | -30°C / +100°C |
| Weight | .49 lbs (.22 kg) |
| Operating Fluid Media | General Purpose Hydraulic Fluid |
| Cartridge Torque Requirements | 30 ft-lbs (41 Nm) |
| Coil Nut Torque Requirements | 2-3 ft-lbs (3-4 Nm) |
| Cavity | DELTA 3W |
| Cavity Tools Kit (form tool, reamer, tap) | 40500001 |

COIL SPECIFICATIONS

| | |
|--------------------------------|------------------------------|
| Current Supply Characteristics | PWM (Pulse Width Modulation) |
| Rated Current Range | 400-1400 mA |
| PWM or Super-Imposed | |
| Dither Frequency | 120-140 Hz |
| Coil Resistance (12 VDC) | 7.2 Ohm ±5% at 68°F (20°C) |

WARNING: the specifications/application data shown in our catalogs and data sheets are intended only as a general guide for the product described (herein). Any specific application should not be undertaken without independent study, evaluation, and testing for suitability.



4484 Boeing Drive Rockford, IL 61109 • USA • Phone +1 (815) 397-6628 • Fax +1 (815) 397-2526
mail: delta@delta-power.com • www.delta-power.com

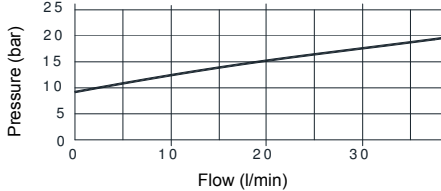


Via Malavolti, 36 • 41122 Modena • ITALY • Phone +39 (059) 254895 • Fax +39 (059) 253512
mail: tecnord@tecnord.com • www.tecnord.com

DIMENSIONS

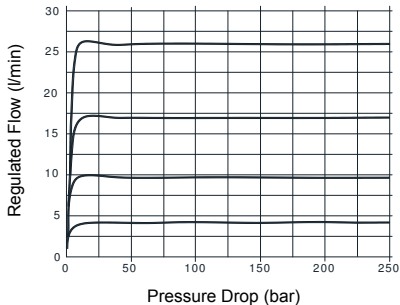
Pressure Drop 3→2 (bar)

Oil 26 cSt (121 SSU) @ 50°C (104°F)



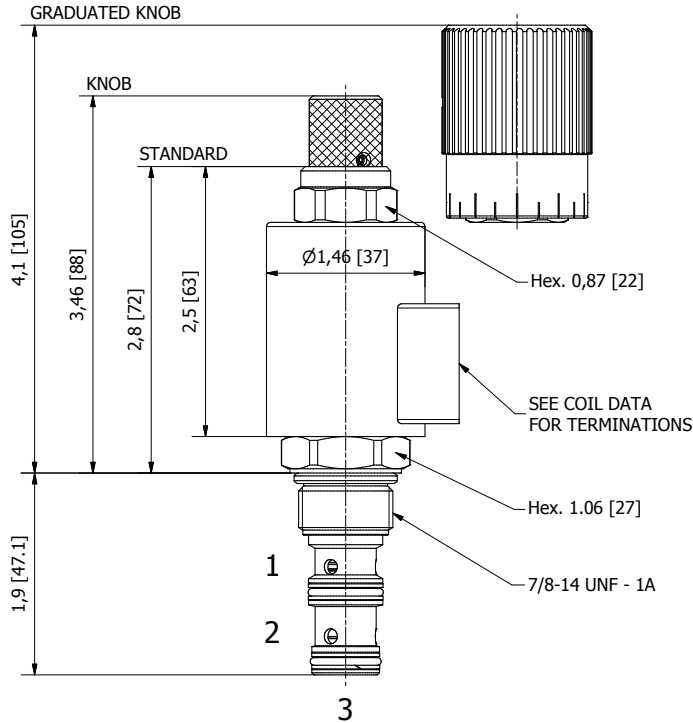
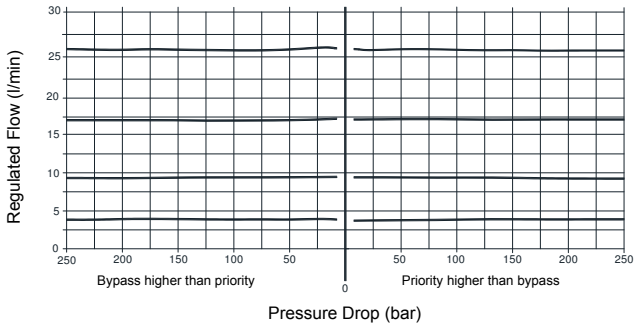
Regulated Flow vs. Pressure

2 WAYS - Coil 12 VDC - 130 Hz PWM - Oil 26 cSt (121 SSU) @ 50°C (104°F)



Pres. Compensation from Inlet to Work Port or Bypass Port

3 WAYS - Coil 12 VDC - 130 Hz PWM - Oil 26 cSt (121 SSU) @ 50°C (104°F)



(for bodies style and sizes see section "Accessories")

ORDERING INFORMATION

Approximate Coil Weight: .47 lbs (.21 kg)

EF-F3G - - - -

OPTIONS

- Buna Standard **B0** Up to 25 l/min
- Buna, Screw Type Override (Knob) **BS** Up to 25 l/min
- Buna, Screw Type Override (Grad. Knob) **BK** Up to 25 l/min

BODIES

- Blank Without Body
- N** 3/8" BSP Ports
- S** #6 SAE Ports

"F" COIL TERMINATION

- HC** DIN 43650 (Hirschmann)
- DI** Deutsch-Integral DT04-2P
- JT** AMP Jr. Timer

VOLTAGE

- 12** 12 VDC
- 24** 24 VDC

NOTES: 1) For other flow settings, consult factory.
2) For other seals, consult factory.

W 5 / 2018

WARNING: the specifications/application data shown in our catalogs and data sheets are intended only as a general guide for the product described (herein). Any specific application should not be undertaken without independent study, evaluation, and testing for suitability.



4484 Boeing Drive Rockford, IL 61109 • USA • Phone +1 (815) 397-6628 • Fax +1 (815) 397-2526
mail: delta@delta-power.com • www.delta-power.com



Via Malavolti, 36 • 41122 Modena • ITALY • Phone +39 (059) 254895 • Fax +39 (059) 253512
mail: tecnord@tecnord.com • www.tecnord.com