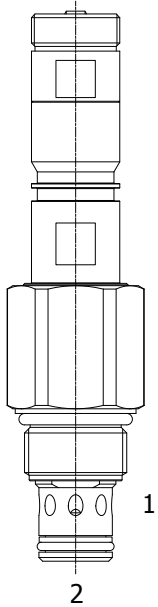


**EE-PRB 2 WAY NORMALLY CLOSED, PROPORTIONAL RELIEF VALVE**



**DESCRIPTION**

10 size, 7/8-14 thread, "Delta" series, solenoid operated, 2 way normally closed, pilot operated spool type relief valve.

**OPERATION**

The EE-PRB blocks flow from (2) to (1) until sufficient pressure is present at (2) to offset a spring induced force. As solenoid current is increased, it offsets a portion of this force, resulting in a lower relief pressure. Can be infinitely adjusted across a prescribed range in response to a PWM (Pulse Width Modulated) current. Pressure output is inversely proportional to the current input. With full current applied to the solenoid, the valve will free flow from (2) to (1), at approximately 100 PSI (7 bar).

*Note: backpressure on port (1) becomes additive to the pressure setting at a 1:1 ratio.*

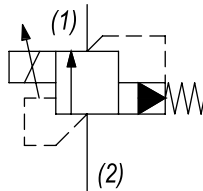
**FEATURES**

- Efficient wet-armature construction.
- Cartridges are voltage interchangeable.
- Industry common cavity.
- Unitized, molded coil design.
- Continuous duty rated solenoid.
- Optional coil voltages and terminations.



*Great for fan drive motor control.*

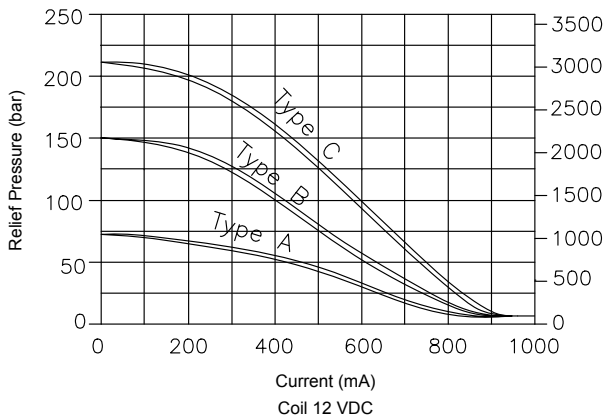
**HYDRAULIC SYMBOL**



**PERFORMANCE**

**Relief pressure vs. Current**

*Constant flow 10 LPM (2.6 GPM)*



**VALVE SPECIFICATIONS**

Nominal Flow	0+20 GPM (0+76 LPM)
Operating Range	100-3000 PSI (7-207 bar)
Typical Hysteresis	10% Max
Viscosity Range	36 to 3000 SSU (3 to 647 cSt)
Filtration	ISO 18/16/13
Media Operating Temp. Range	-30°C / +100°C
Weight	.62 lbs (.28 kg)
Operating Fluid Media	General Purpose Hydraulic Fluid
Cartridge Torque Requirements	30 ft-lbs (40.6 Nm)
Coil Nut Torque Requirements	2-3 ft-lbs (3-4 Nm)
Cavity	DELTA 2W
Cavity Tools Kit (form tool, reamer, tap)	40500000
Seal Kit	21191202

**COIL SPECIFICATIONS**

Current Supply Characteristics	PWM (Pulse Width Modulation)
Rated Current Range	100+1000 mA
PWM or Super-Imposed	
Dither Frequency	120+200 Hz
Coil Resistance (12 VDC)	7.2 Ohm ±5% at 68°F (20°C)

**WARNING:** the specifications/application data shown in our catalogs and data sheets are intended only as a general guide for the product described (herein). Any specific application should not be undertaken without independent study, evaluation, and testing for suitability.



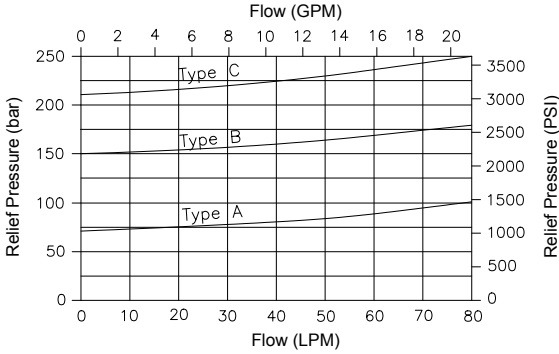
4484 Boeing Drive Rockford, IL 61109 • USA • Phone +1 (815) 397-6628 • Fax +1 (815) 397-2526  
 mail: delta@delta-power.com • www.delta-power.com



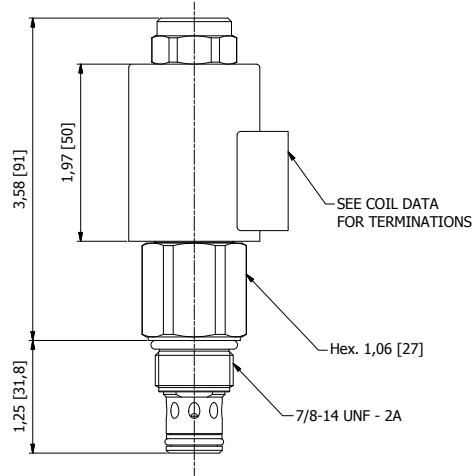
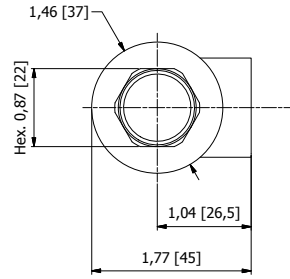
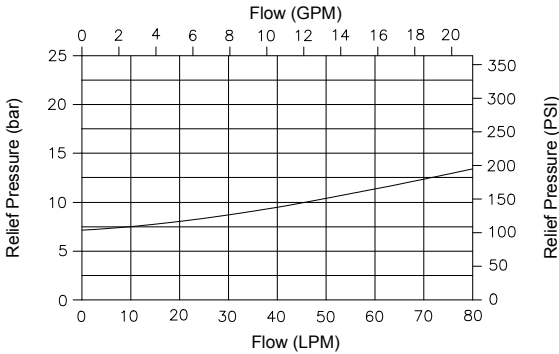
Via Malavolti, 36 • 41122 Modena • ITALY • Phone +39 (059) 254895 • Fax +39 (059) 253512  
 mail: tecnord@tecnord.com • www.tecnord.com

**DIMENSIONS**

**Relief pressure vs. Flow - No current applied**  
*Constant flow 10 LPM (2.6 GPM)*



**Pressure Drop vs. Flow**  
*Coil energized*



(for bodies style and sizes see section "Accessories")

**ORDERING INFORMATION**

Approximate Coil Weight: .47 lbs (.21 kg)

EE-PRB - - - -

- OPTIONS**
- Buna, 100-1015 PSI range (7-70 bar) **0A**
  - Viton, 100-1015 PSI range (7-70 bar) **VA**
  
  - Buna, 100-2175 PSI range (7-150 bar) **0B**
  - Viton, 100-2175 PSI range (7-150 bar) **VB**
  
  - Buna, 100-3000 PSI range (7-207 bar) **0C**
  - Viton, 100-3000 PSI range (7-207 bar) **VC**

- BODIES**
- Blank Without Body
  - N** 3/8" BSP Ports
  - S** #8 SAE Ports

- VOLTAGE** (other voltages available on request)
- 12** 12 VDC
  - 24** 24 VDC

**"F" COIL TERMINATION**

- DIN 43650 (Hirschmann) **HC**
- Deutsch - Integral DT04-2P **DI**
- AMP Jr. Timer **JT**

W 5 / 2018

**WARNING:** the specifications/application data shown in our catalogs and data sheets are intended only as a general guide for the product described (herein). Any specific application should not be undertaken without independent study, evaluation, and testing for suitability.



4484 Boeing Drive Rockford, IL 61109 • USA • Phone +1 (815) 397-6628 • Fax +1 (815) 397-2526  
 mail: delta@delta-power.com • www.delta-power.com



Via Malavolti, 36 • 41122 Modena • ITALY • Phone +39 (059) 254895 • Fax +39 (059) 253512  
 mail: tecnord@tecnord.com • www.tecnord.com