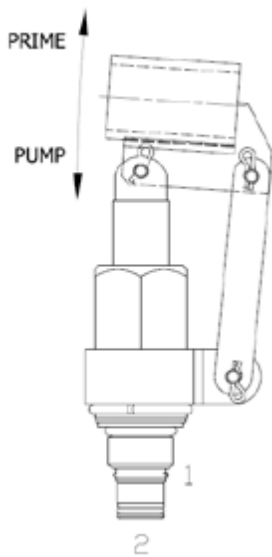


DE-HPB HAND PUMP, PUSH TO PUMP TYPE**DESCRIPTION**

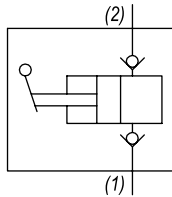
10 size, 7/8-14 thread, "Delta" series, screw in, cartridge type, hand pump.

OPERATION

The DE-HPB hand pump when pipe handle is lifted, primes thru port (1) and when pushed provides flow pressure to outlet port (2).

FEATURES

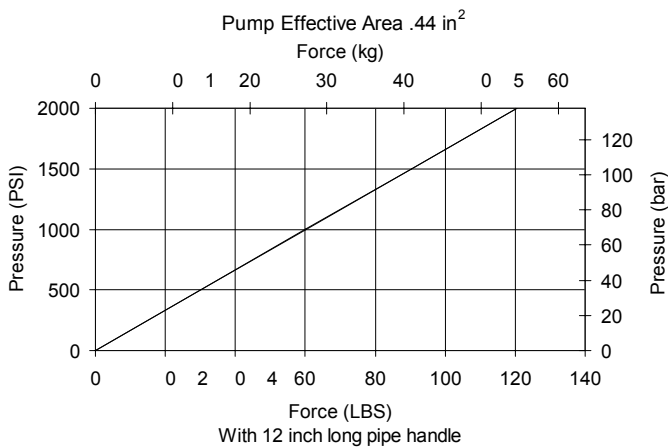
- Large displacement per stroke.
- Industry common cavity.

HYDRAULIC SYMBOL

*This product is not intended as a load holding device. **Linkage is not to be removed.** 24" handle not supplied.*

PERFORMANCE

Actual Test Data (Cartridge Only)

**VALVE SPECIFICATIONS**

Nominal Flow	.39 cu in/stroke
Rated Operating Pressure	2000 PSI (138 bar)
Typical Internal Leakage (150 SSU)	0-10 drops/min
Viscosity Range	36 to 3000 SSU (3 to 647 cSt)
Filtration	ISO 18/16/13
Media Operating Temp. Range	-40° to 250°F (-40° to 120°C)
Weight	1.5 lbs (.69 kg)
Operating Fluid Media	General Purpose Hydraulic Fluid
Cartridge Torque Requirements	30 ft-lbs (40.6 Nm)
Cavity	DELTA 2W
Cavity Form Tool (Finishing)	40500000
Seal Kit	21191200

WARNING: the specifications/application data shown in our catalogs and data sheets are intended only as a general guide for the product described (herein). Any specific application should not be undertaken without independent study, evaluation, and testing for suitability.

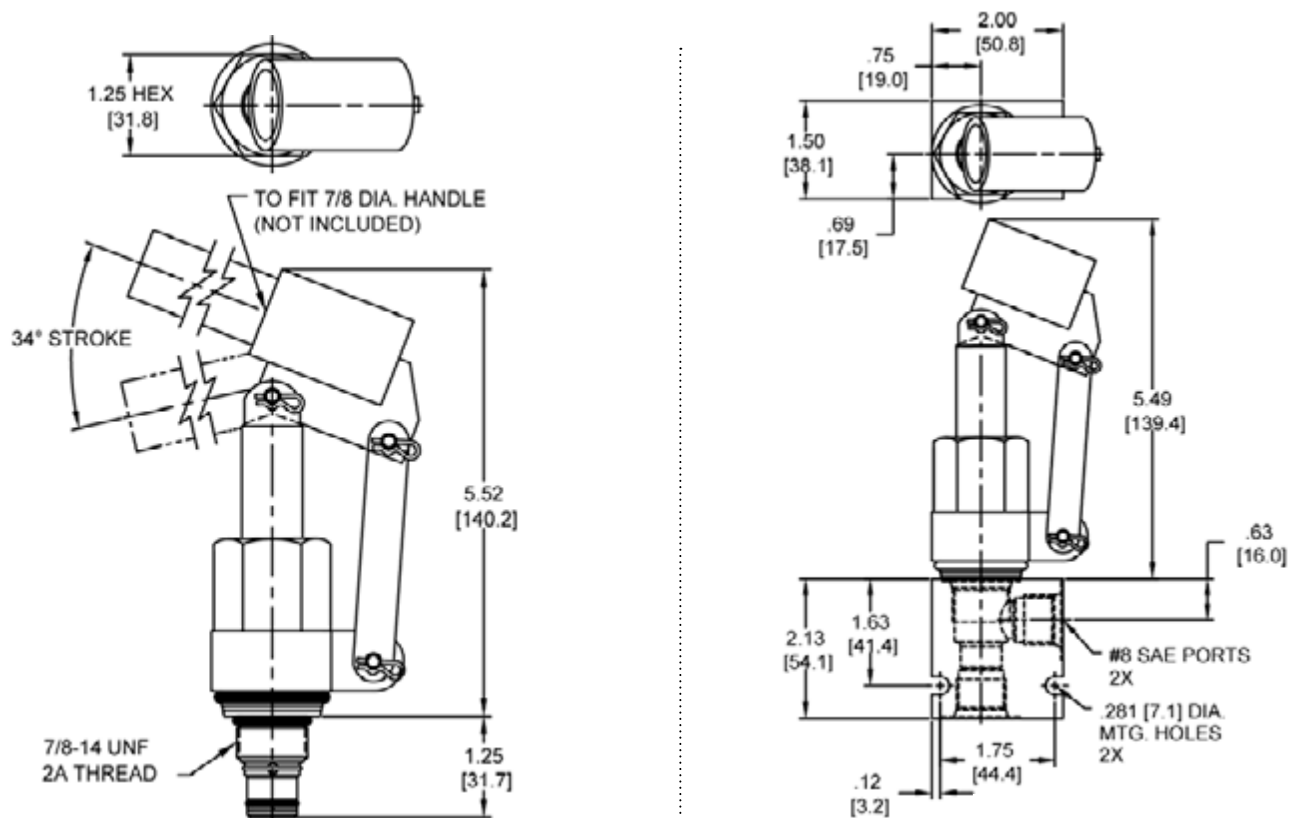


4484 Boeing Drive Rockford, IL 61109 • USA • Phone +1 (815) 397-6628 • Fax +1 (815) 397-2526
mail: delta@delta-power.com • www.delta-power.com

TECNORD

Via Malavolti, 36 • 41122 Modena • ITALY • Phone +39 (059) 254895 • Fax +39 (059) 253512
mail: tecnord@tecnord.com • www.tecnord.com

DIMENSIONS



Body Weight: .47 lbs (21 kg)

ORDERING INFORMATION

DE-HPB		-	-	
				BODIES
				Without Body
				3/8" NPTF Ports
				#8 SAE Ports
				Blank
				N
				S

OPTIONS

Buna, Linkage **OL**
Viton, Linkage **VL**

W7 / 2017

WARNING: the specifications/application data shown in our catalogs and data sheets are intended only as a general guide for the product described (herein). Any specific application should not be undertaken without independent study, evaluation, and testing for suitability.



4484 Boeing Drive Rockford, IL 61109 • USA • Phone +1 (815) 397-6628 • Fax +1 (815) 397-2526
mail: delta@delta-power.com • www.delta-power.com



Via Malavolti, 36 • 41122 Modena • ITALY • Phone +39 (059) 254895 • Fax +39 (059) 253512
mail: tecnord@tecnord.com • www.tecnord.com