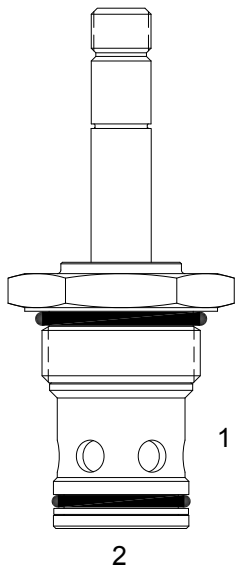


**SJ-S2B PILOT OPERATED POPPET, 2 WAY NORMALLY CLOSED**



**DESCRIPTION**

16 size, 1 5/16-12 thread, "Super" series, solenoid operated, 2 way normally closed, pilot operated poppet valve with reverse flow energized and de-energized.

**OPERATION**

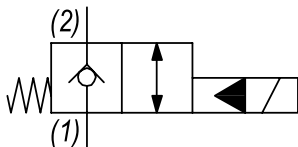
When de-energized the SJ-S2B blocks flow from (1) to (2) and allows reverse flow from (2) to (1). When energized the valve allows flow from (1) to (2) and from (2) to (1).

**OPERATION OF MANUAL OVERRIDE OPTION:** to override, pull knob out. On the detented version, after pulling knob out twist 180 degrees and release. The valve will remain in that position.

**FEATURES**

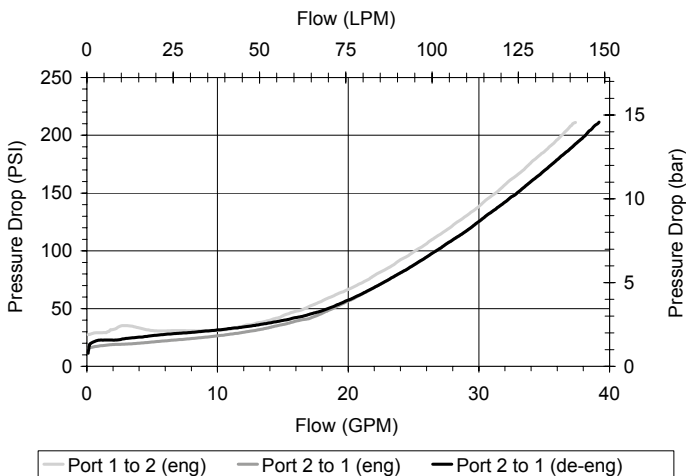
- Hardened parts for long life.
- Efficient wet-armature construction.
- Cartridges are voltage interchangeable.
- Manual override option.
- Industry common cavity.
- Unitized, molded coil design.
- Continuous duty rated solenoid.
- Optional coil voltages and terminations.
- Optional "I" Coil: Weatherproof, Thermal Shock, Immersion Safe.

**HYDRAULIC SYMBOL**



**PERFORMANCE**

Actual Test Data (Cartridge Only)



**VALVE SPECIFICATIONS**

|                                    |                                 |
|------------------------------------|---------------------------------|
| Nominal Flow                       | 30 GPM (114 LPM)                |
| Rated Operating Pressure           | 3500 PSI (241 bar)              |
| Typical Internal Leakage (150 SSU) | 0-10 drops/min                  |
| Viscosity Range                    | 36 to 3000 SSU (3 to 647 cSt)   |
| Filtration                         | ISO 18/16/13                    |
| Media Operating Temp. Range        | -40° to 250°F (-40° to 120°C)   |
| Weight                             | .72 lbs (.32 kg)                |
| Operating Fluid Media              | General Purpose Hydraulic Fluid |
| Cartridge Torque Requirements      | 90 ft-lbs (122 Nm)              |
| Coil Nut Torque Requirements       | 4-6 ft-lbs (5.4-8.1 Nm)         |
| Cavity                             | SUPER 2W                        |
| Cavity Tools Kit                   |                                 |
| (form tool, reamer, tap)           | 40500017                        |
| Seal Kit                           | 21191401                        |

**WARNING:** the specifications/application data shown in our catalogs and data sheets are intended only as a general guide for the product described (herein). Any specific application should not be undertaken without independent study, evaluation, and testing for suitability.

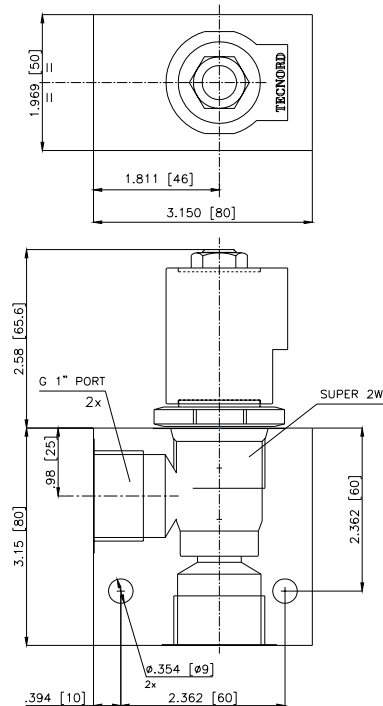
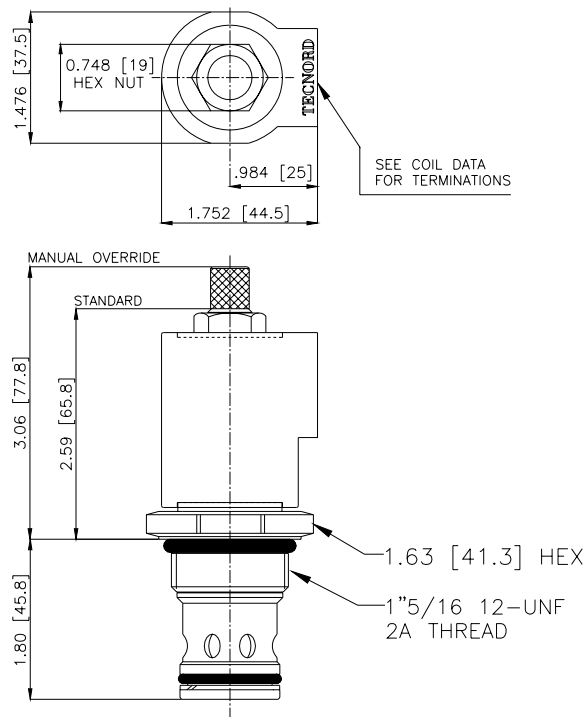


4484 Boeing Drive Rockford, IL 61109 • USA • Phone +1 (815) 397-6628 • Fax +1 (815) 397-2526  
mail: delta@delta-power.com • www.delta-power.com



Via Malavolti, 36 • 41122 Modena • ITALY • Phone +39 (059) 254895 • Fax +39 (059) 253512  
mail: tecnord@tecnord.com • www.tecnord.com

## DIMENSIONS



## ORDERING INFORMATION

Approximate Coil Weight: .56 lbs (.25 kg)

**SJ-S2B**

### OPTIONS

|                                     |           |
|-------------------------------------|-----------|
| Buna Standard                       | <b>00</b> |
| Viton Standard                      | <b>V0</b> |
| Buna, Override, Detent              | <b>0M</b> |
| Viton, Override, Detent             | <b>VM</b> |
| Buna, Override, Non-Detent          | <b>B1</b> |
| Viton, Override, Non-Detent         | <b>V1</b> |
| Buna, Screen, Override, Non-Detent  | <b>B3</b> |
| Viton, Screen, Override, Non-Detent | <b>V3</b> |
| Buna, Screen, Override, Detent      | <b>B4</b> |
| Viton, Screen, Override, Detent     | <b>V4</b> |

**Note: use screen only if flow direction is from (1) to (2)**

### "V" COIL TERMINATION

(All DC Except as Noted)

**DL** Double Lead  
(several types of termination can be attached on leads on request)

**HC** DIN 43650 (Hirschmann) - (AC&DC)  
**DI** Deutsch - Integral DT04-2P

### BODIES

|              |               |
|--------------|---------------|
| <b>Blank</b> | Without Body  |
| <b>N</b>     | 1" BSP Ports  |
| <b>S</b>     | #12 SAE Ports |

### VOLTAGE (other voltages available on request)

|           |                                    |
|-----------|------------------------------------|
| <b>12</b> | 12 VDC                             |
| <b>24</b> | 24 VDC                             |
| <b>22</b> | 220 VAC without internal rectifier |

### IMMERSION PROOF "D" TYPE

|            |                                     |
|------------|-------------------------------------|
| <b>DIA</b> | "I" Coil AMP Superseal - Integral   |
| <b>DID</b> | "I" Coil Deutsch - Integral DT04-2P |
| <b>DIJ</b> | "I" Coil AMP Jr. Timer - Integral   |
| <b>DIM</b> | "I" Coil Metri-Pack - Integral      |

W 40 / 2017

**WARNING:** the specifications/application data shown in our catalogs and data sheets are intended only as a general guide for the product described (herein). Any specific application should not be undertaken without independent study, evaluation, and testing for suitability.



4484 Boeing Drive Rockford, IL 61109 • USA • Phone +1 (815) 397-6628 • Fax +1 (815) 397-2526  
mail: delta@delta-power.com • [www.delta-power.com](http://www.delta-power.com)



Via Malavolti, 36 • 41122 Modena • ITALY • Phone +39 (059) 254895 • Fax +39 (059) 253512  
mail: tecnord@tecnord.com • [www.tecnord.com](http://www.tecnord.com)