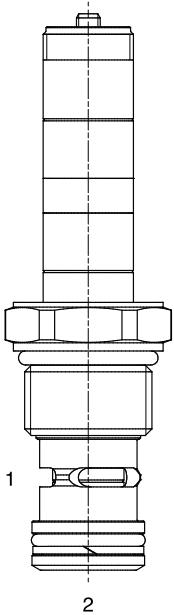


**ET-P2S 2 WAY NORMALLY CLOSED, PROPORTIONAL FLOW CONTROL VALVE**



**DESCRIPTION**

12 size, 1 1/16-12 thread, "Tecnord" series, solenoid operated, 2 way normally closed, proportional flow control valve.

**OPERATION**

When de-energized the ET-P2S blocks flow at ports (2) and (1). When energized, the valve allows flow from (1) to (2). Flow is proportional to the current applied to the coil. A compensator must be used to create a pressure compensated flow control function.

**OPERATION OF MANUAL OVERRIDE OPTION:** to override, turn the manual override screw counterclockwise. To release turn the manual override screw clockwise.

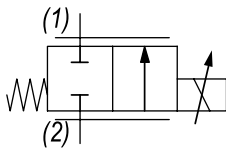
**FEATURES**

- Efficient wet-armature construction.
- Cartridges are voltage interchangeable.
- Industry common cavity.
- Unitized, molded coil design.
- Continuous duty rated solenoid.
- Optional coil voltages and terminations.



*Curves are attained with Tecnord QC-CP3 compensator.*

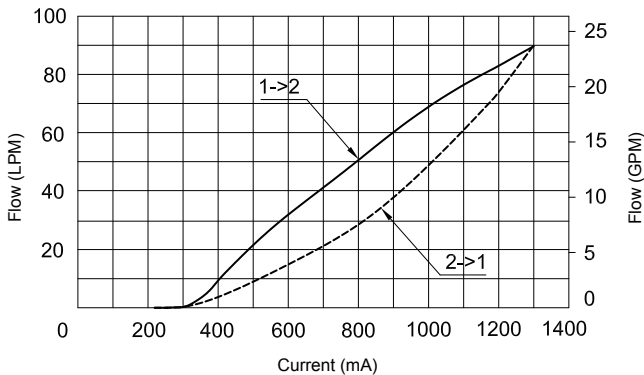
**HYDRAULIC SYMBOL**



**PERFORMANCE**

**Flow vs. Current**

Coil 12 VDC - Press. Drop = 14 bar - Oil 46 cSt (217 SSU) @ 50°C (122°F)



**VALVE SPECIFICATIONS**

Flow Range	See curves for various versions
Max System Pressure	3500 PSI (241 bar)
Leakage	Max 50 cc/min at 245 bar
Hysteresis	±3%
Viscosity Range	36 to 3000 SSU (3 to 647 cSt)
Filtration	ISO 18/16/13
Media Operating Temp. Range	-30°C / +100°C
Weight	.72 lbs (.32 kg)
Operating Fluid Media	General Purpose Hydraulic Fluid
Cartridge Torque Requirements	37 ft-lbs (50 Nm)
Coil Nut Torque Requirements	2-3 ft-lbs (3-4 Nm)
Cavity	TECNORD 2W
Cavity Tools Kit (form tool, reamer, tap)	40500032
Seal Kit	21191200

**COIL SPECIFICATIONS**

Current Supply Characteristics	PWM (Pulse Width Modulation)
Rated Current Range	400-1400 mA
PWM or Super-Imposed	
Dither Frequency	100-150 Hz
Coil Resistance (12 VDC)	7.2 Ohm ±5% at 68°F (20°C)

**WARNING:** the specifications/application data shown in our catalogs and data sheets are intended only as a general guide for the product described (herein). Any specific application should not be undertaken without independent study, evaluation, and testing for suitability.

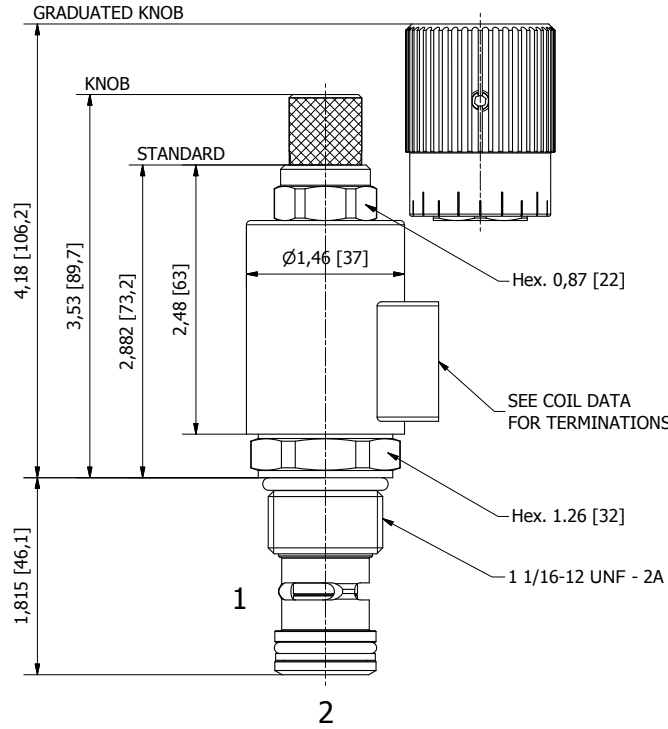
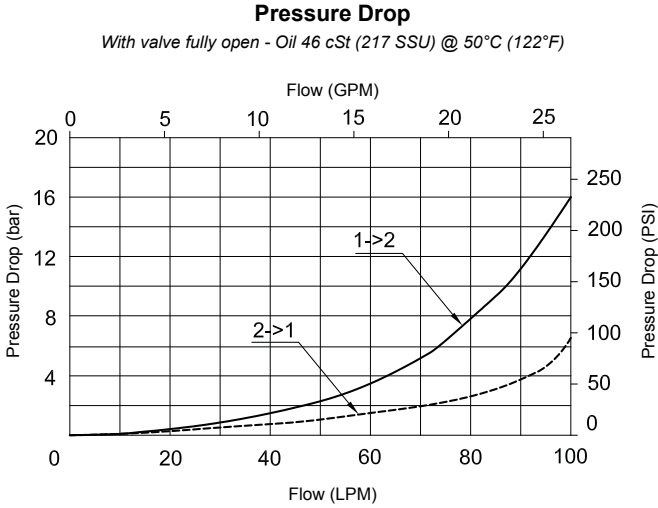


4484 Boeing Drive Rockford, IL 61109 • USA • Phone +1 (815) 397-6628 • Fax +1 (815) 397-2526  
mail: delta@delta-power.com • www.delta-power.com



Via Malavolti, 36 • 41122 Modena • ITALY • Phone +39 (059) 254895 • Fax +39 (059) 253512  
mail: tecnord@tecnord.com • www.tecnord.com

**DIMENSIONS**



(for bodies style and sizes see section "Accessories")

**ORDERING INFORMATION**

Approximate Coil Weight: .47 lbs (.21 kg)

**ET-P2S - - - -**

<p><b>OPTIONS</b></p> <p>Buna Standard <b>C0</b> Up to 90 l/min              Buna, Screw Type Override (Knob) <b>CS</b> Up to 90 l/min              Buna, Screw Type Override (Grad. Knob) <b>CK</b> Up to 90 l/min</p>	<p><b>"F" COIL TERMINATION</b></p> <p><b>HC</b> DIN 43650 (Hirschmann)  <b>DI</b> Deutsch-Integral DT04-2P  <b>JT</b> AMP Jr. Timer</p>	<p><b>BODIES</b></p> <p><b>Blank</b> Without Body  <b>N</b> 3/4" BSP Ports  <b>S</b> #8 SAE Ports</p> <p><b>VOLTAGE</b></p> <p><b>12</b> 12 VDC  <b>24</b> 24 VDC</p>
---	---	---

**NOTES:** 1) Flows refer to a 14 bar Delta P  
 2) For other seals, consult factory

WARNING: the specifications/application data shown in our catalogs and data sheets are intended only as a general guide for the product described (herein). Any specific application should not be undertaken without independent study, evaluation, and testing for suitability.



4484 Boeing Drive Rockford, IL 61109 • USA • Phone +1 (815) 397-6628 • Fax +1 (815) 397-2526  
 mail: delta@delta-power.com • www.delta-power.com



Via Malavolti, 36 • 41122 Modena • ITALY • Phone +39 (059) 254895 • Fax +39 (059) 253512  
 mail: tecnord@tecnord.com • www.tecnord.com